

PERFORMANCES

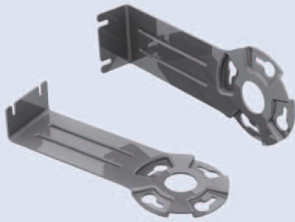
MODELS	m ³ /h	l/s	Pa	W	A	dB(A)*
AXC 100 A	237	66	279	27	0,13	30
AXC 100 B	260	72	383	50	0,23	36
AXC 125 A	287	80	238	27	0,13	32
AXC 125 B	313	87	345	50	0,23	36
AXC 150 A	337	94	189	29	0,14	33
AXC 150 B	537	149	406	80	0,37	39
AXC 160 A	365	101	203	29	0,14	31
AXC 160 B	754	209	476	110	0,50	38
AXC 200	887	246	460	110	0,50	34
AXC 250	1114	309	543	150	0,65	43
AXC 315	1439	400	742	260	1,14	43

*Lp(A) at 3m in free field 230V-50Hz.

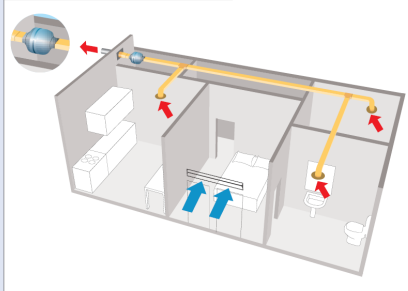


Comply with ErP Directive 2009/125/CE and UE Regulation 1253/2014. Residential Ventilation Unit.

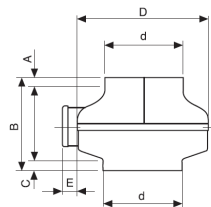
- High performance centrifugal fans for in-line duct installation.
- Easy and cost-effective solution for a centralized ventilation requirement.
- 11 models Ø100 to 315 mm.
- Steel housing with epoxy finish inside and outside.
- Ball-bearing motor. Backward curved blades.
- Supplied with wall fixing brackets.



INSTALLATION



DIMENSIONS



MODELS	A	B	C	∅D	∅d	E	Kg
AXC 100 A/B	12	215	24	245	98	38	3
AXC 125 A/B	11	215	24	245	122	38	3
AXC 150 A	21	216	23	245	147	38	3
AXC 150 B	22	230	22	333	148	38	5
AXC 160 A	24	215	24	245	157	38	3
AXC 160 B	21	230	22	333	158	38	5
AXC 200	22	230	27	333	198	38	5
AXC 250	22	230	35	333	248	38	5
AXC 315	30	308	52	404	314	38	9

CURVES

