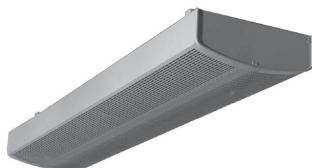




VPK



Passive chilled beams



Product description

The ceiling-mounted terminal units known as passive chilled beams, **VPK** model, without air supply, are used to offset internal loads in an area.

Passive chilled beams use water to carry cooling power to the various areas, which is an advantage, as the units save on energy and space, in comparison to all-air systems.

Passive chilled beams may be installed flush with a drop ceiling or in a hanging position.

Models

VPK. Passive chilled beams with perforated plate.

VPK-E. Passive chilled beams without perforated plate.

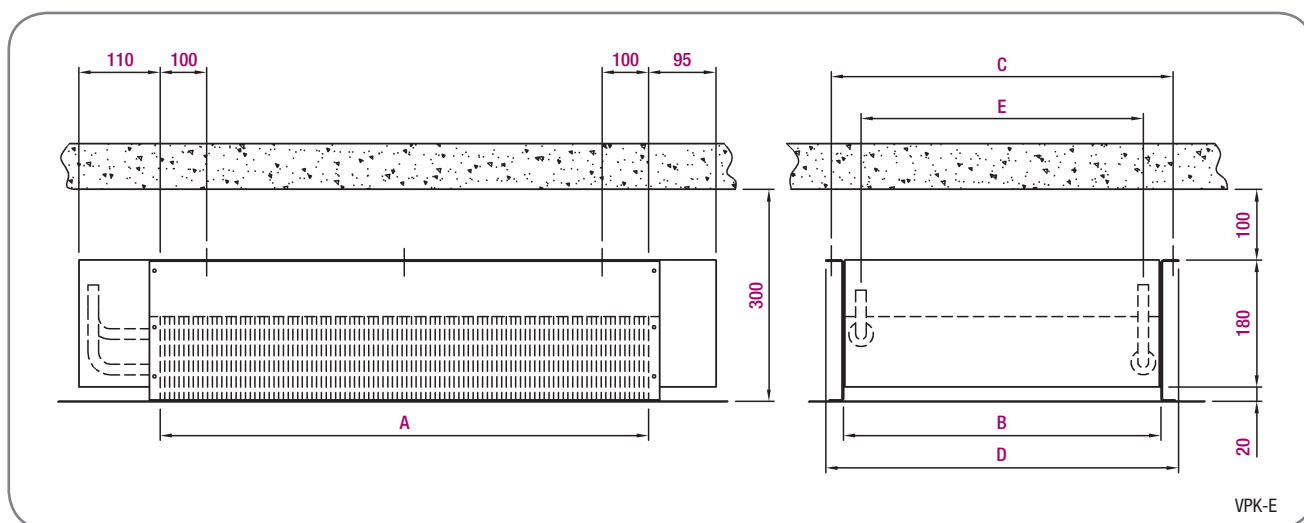
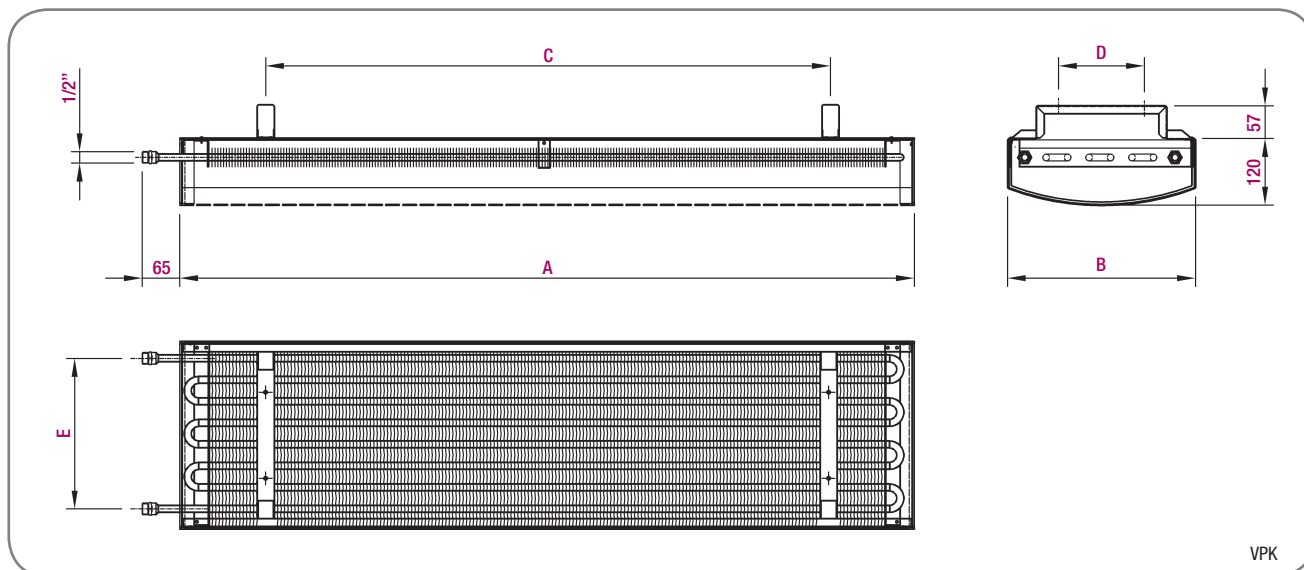
Finished

The housing and perforated plate are manufactured from galvanized steel.

The heat exchanger unit consists of copper pipes and an aluminium fin pack, with galvanized flanges. The standard surface finish is pure white (RAL 9010) with a powder finish. Both plate perforation and colours can be modified upon request.

In addition, light fixtures, speakers, sprinklers, etc., may be installed in the beam.

General dimensions



Model	A	B	C	D	E
VPK-120-330-900	900	330	600	150	263
VPK-120-330-1200	1200	330	900	150	263
VPK-120-330-1500	1500	330	1200	150	263
VPK-120-330-1800	1800	330	1500	150	263
VPK-120-330-2100	2100	330	2x900	150	263
VPK-120-330-2400	2400	330	2x1050	150	263
VPK-120-330-2700	2700	330	2x1200	150	263
VPK-120-330-3000	3000	330	2x1350	150	263

Unit mm

VPK-E

A	B	C	D	E
1500	320	354	370	270
2000				
2500				
3000				
1500	450	484	500	400
2000				
2500				
3000				
1500	600	634	650	550
2000				
2500				
3000				

Unit mm